

F. OLAF ANDERSEN

BERLIN S14

KOMMANDANTEN-STREET 53

Telephone: A 7 Donhoff 269

Deutsche Bank, Deposit Office D

Postal Check: Berlin 95043



Oldest self-founded, most modern aquarium shop. For 38 years, we have offered our own plumbing services for modern aquariums and terrariums of all dimensions. :: Inventor of the world-renowned breeding aquarium 'Ideal' :: Breeder of exotic ornamental fish :: Cultivation of aquatic plants

Import

Resellers receive a Discount

Export

Association of Aquarium and
Terrarium Enthusiasts in Hamburg
3 December 1901
Certificate for the Aquarium

'Ideal'

**Highest Award for Outstanding
Overall Performance
Honorary Prize of Berlin**

At the exhibit of the
Association Triton of Berlin
15. September 1902

Silver Medal

3. November 1902

Bronze Medal

The Chamber for Agricultural
for the Province of fur Brandenburg,
7. July 1903

Honoraray Prize: Silver Medal

The Imperial Russian Acclimatization
Society, Moscow 1903

Gold Medal

At the Aquarium and Terrarium
Exhibition
Dortmund 1905

First Place: Large Silver Medal

At the Aquarium and Terrarium
Exhibition
Hamburg 1907

Two Silver Medals
Association of Aquarium and
Terrarium Enthusiasts in Berlin

Honorary Distinction
Scandinavian Fisheries Exhibition in
Copenhagen, July 5 to August 26,
1912

As well as many other recognitions
from authorities of the highest rank
and the press

Supplier to the aquarium at the
Zoological Garden in Berlin
Supplier to the Museum of Marine
Science at the University of Berlin
Supplier to many state institutes,
higher educational institutions, and
aquarium associations domestically
and abroad

Supplier to the Prussian State
Institute for Water, Soil, and Air
Hygiene

Supplier to the secondary and
primary schools of Greater Berlin

Gold Medal

For overall performance at the
Flowers and Fish Exhibition 1931 by
the Nymphaea Alba Association,
Berlin.

**Honorary member of the Triton
Association, Berlin, 1931.**



Illuminated Fountain

Excellent decorative ornaments for all rooms
 Recognized as best for air purification.
 Usable where ever electric light is
 Easy Installation- without water supply or drainage



Gently flowing water in your own home—a relaxing effect through the colored lighting of the water jet and the illuminated rose garland that decorates the housing—can be connected to any electric line via plug contact, always using the same water, portable, and automatic.

A small electric motor suitable for 110 and 220 volts, directly coupled with a pump specially designed for this purpose, forms the drive mechanism. The water is drawn from the basin and falls in 60 jets from all sides onto the internally lit glass dome, the color of which can be freely changed by placing differently colored cones over it.

The height of the water jet is regulated by a throttle—artistically crafted glass roses that contain a small light bulb inside, creating a wonderful illumination. This garland is pre-mounted on a metal band and can be easily removed. By lifting off the glass basin, the interior is easily accessible if necessary, and any part can be replaced without difficulty. The motor and pump are on a separate foundation, and the drive mechanism, as well as the lighting system, can be easily removed. The drive mechanism, lighting, and rose garland can be switched independently.

The simplicity and perfection of the device are remarkable. No additional accessories are necessary.

Total height: 43 cm
 Diameter of the glass bowl: 50 cm
 Required setup space: Diameter 45 cm

Price with all accessories, including 2 small spare light bulbs: RM 209*,- plus RM 6*,- for crate packaging

Payment: 1/3 upon ordering, the remainder before shipment or cash on delivery for abroad.
 Delivery free to the German border or a German port.

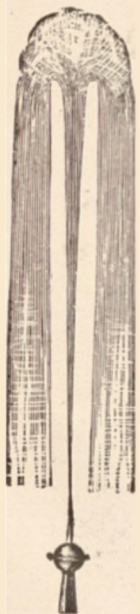
Electric Fountain

Aquarium Aerator, Room Air Freshener, etc. For any voltage and current type, suitable for winter gardens, hallways, etc.

With the help of a universal motor and, above all, with a thoroughly tested, exceptionally powerful pump, a unit has been assembled that meets all requirements. The motor and pump operate noiselessly, the pump delivers a sufficient amount of water for any fountain, and the entire assembly is durable with minimal dimensions. A significant advantage of the water pump is the elimination of any reciprocating movement and transmission. The pump runs at the same speed as the motor and is directly coupled. The energy consumption is very low: about 30 watts at 13 volts and about 50 watts at 22 volts, which means that only after about 33 or 20 hours is one kilowatt-hour consumed. The price of the entire system is extremely modest. The accessories are good and designed for continuous operation. The adjustability is exceptionally good, and the motor is equally suitable for direct current, alternating current, or three-phase current. **Water renewal is not necessary** because the water circulates in the fountain. This also avoids the sometimes very undesirable cooling of the water. Installation: above, below, or next to the aquarium. Completely replaces aeration.

Fountain Unit: Price RM. 56*

1.) Universal motor for direct or alternating current, 110 or 220 volts, with regulating resistance. High-performance screw pump with elastic coupling, capable of driving up to 50 jets 1 meter high.



Fountain nozzles made of glass, each piece RM 0.20 up to RM 2, and brass (nickel-plated) in a wide variety of designs.

*RM. 11.50 is around \$48.3 USD today
 *RM. 2 is around \$8.4 USD today
 *RM. 56 is around \$ 235.2 USD today
 *RM. 20 is around \$84 USD today
 *RM. 14.50 is around \$60.9 USD today

Aeration Device "Ideal"

Price only RM 14.50*

Without connection and supply pipe

An equally original and practical aquarium device.

It consists of a glass cylinder, roughly only 8 x 14 cm high, with tightly screwed lids. The operation and the whole system are clearly visible through the glass.

There are no malfunctions, repairs, maintenance, noise, or wear and tear. Turning it on and off is all you need to do. Required line pressure: about 2 atmospheres.

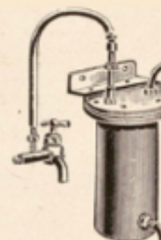
The metal parts are very robust, and the lids are high-gloss nickel-plated. Attractive appearance, pleasing shapes. An adornment for any aquarium setup, surprisingly strong in compressed air generation.

Water consumption is minimal and is not recorded by water meters. **Guaranteed** to work flawlessly for 1/2 year. Price RM 11.50* for the device with connection pipe and RM 2 for the connection to the tap, 3/8 or 1/2 inch. Please specify when ordering.

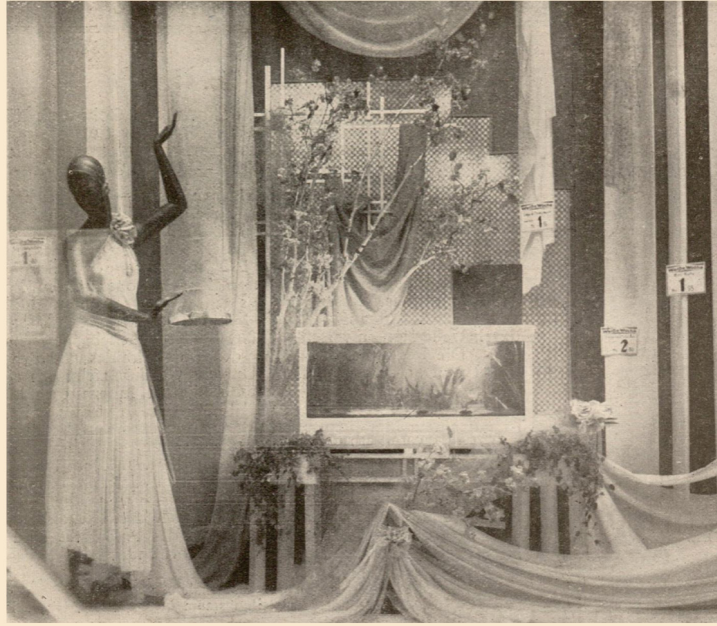
The New Transparent Injection

Aerator:

The Aeration Device "Ideal" D.R.G.M. operates almost noiselessly as a jet device. All parts are made of brass and copper, manufactured for maximum durability. The parts do not wear out. At 10 outlets, it consumes about 1 cubic meter per week. Fewer outlets mean less water consumption. The Aeration Device "Ideal" drives up to 15 outlets.



F. Olaf Andersen's Exhibitions Collections



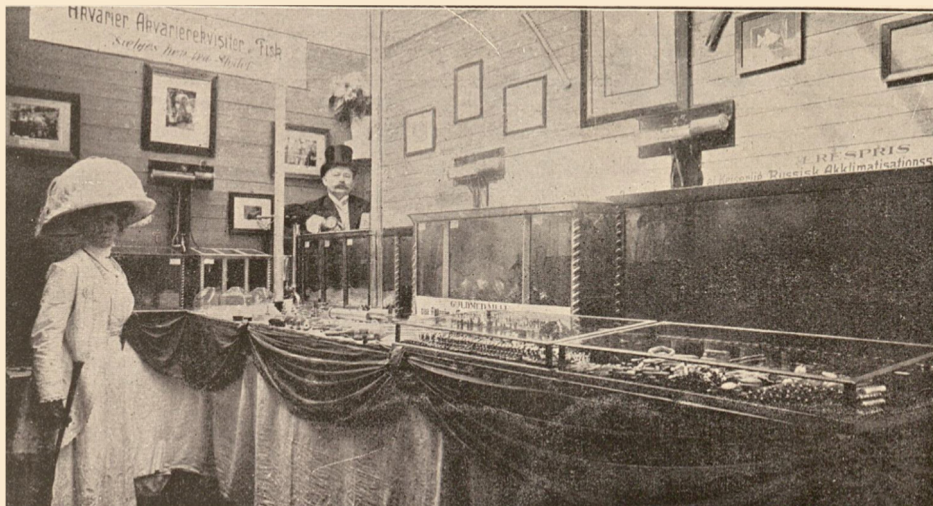
F. Olaf Andersen, aquarium decoration found in 6 shop windows of the Fa. A. Wertham company, Berlin, February 28 to March 6, 1931



F. Olaf Andersen, participation in the exhibition 'Nature at Home' in Berlin-Steglitz from November 17 to 22, 1931

Interior of the
aquarium building

Fisheries
Exhibitor
in Copenhagen
1912



Honorary Distinction at the
Scandinavian Fisheries
Exhibition in
Copenhagen,
July 5 to August 26, 1912.

Some
exhibition collections at
the Jubilee Exhibition of the
'Triton' Society,
Berlin 1913.



F. Olaf Andersen,
31-year member of the
'Triton' Society,
elected as an honorary member in
Berlin.

Highest award for outstanding overall performance: Honorary Prize of the City of Berlin.



Partial views of the approximately 31-meter-long booth of the firm F. Olaf Andersen at the exhibition 'Flowers and Fish' from August 23 to September 2, 1931, in the giant halls of the 'New World.'

For overall performance, received the 'Gold Medal 1931' from the Nymphaea alba Society, Berlin.